

July 2006

# Band Notes



It's not too late to order your copy of the 2006 GS Marching Band DVD! This DVD features interviews with the band members, candid video footage of band camp, and the complete field show from 2006.

This is a great way to save the memories of our band and their performances.

Great gift for your students, grandparents, and out-of-town relatives.

Use the order form from this newsletter or get one from the website at [www.gsband.com](http://www.gsband.com).

## Meet the Freshman / Ice Cream Social

July 25th will be the first night for Freshman to report to band camp. Freshman and Section Leaders will report to the band room at 6:30pm for orientation. All other band members are encouraged to attend an ice cream social at 8:30pm. This is a great opportunity to meet the new band members and make them feel welcome!

## Band Camp Picnic

School has just ended, but no time to relax. Band Camp will soon be here! This years camp will be held July 31st through August 4th. Band Members will report for two daily sessions of practice and field show preparation. The Band Boosters will again sponsor a picnic on Friday after the morning session. (Students will need to arrange a ride home after the picnic) Plan to attend for some good food, fun and friendship at the New Holland Park.

## Parents Night Show...Middle School Parents please take note!

All band parents are invited to attend this years Parents Night Show on Aug. 4 at 7:00pm in the football stadium. We also would like to invite all Middle School Band parents and students to the show as well. This is a great opportunity to see what happens at band camp and also to learn about fund raising opportunities to help with the cost of going to Disney in January of 2008. 8th Grade students will eligible to travel to Disney with the band in 2008, so, come out and see how much fun Band is!!!!

See you at the show!

## Section Leaders for 2006/2007

The GSHS Marching Band Section Leaders have been selected. The following students will serve as leaders of their respective sections:

- |              |                  |                 |               |
|--------------|------------------|-----------------|---------------|
| Katie Parkes | Amanda Tyson     | Kim Landis      | Rebecca Kulp  |
| Ellen Space  | Chris Orr        | Matt Buffington | Josiah Eubank |
|              | Marjorie Supplee | Kate Timpson    |               |

Cancellations and corrections can be found on the band calendar at : [www.gsband.com](http://www.gsband.com)

In this issue:

Upcoming Fund Raisers	2
Student Officers 06/07	2
Fund Raisers	2
New Officers Listed	2
Arte Shaw information	3
Disney Payment Schedule	3
Fry Stand Training Night	3
Fry Stand Form	4
Chaperone Stand Form	5
Sub Sale Order Form	6
Artie Shaw Ticket Information/Order Form	7
DVD Order Form	8



# Fundraisers

Fundraiser forms, tally sheets and other important information can be found at the booster website: [www.gsband.com](http://www.gsband.com) Check it out!

## Yoder's Receipt Fund Raisers General Information

Looking for an easy to do fund raiser. Collect Yoder's Market and Pharmacy receipts. Each student receives 1% of the total from receipts they turn in deposited into their student account.

Please make sure you are using the correct subtotal. Due to new Yoder's discounts, some receipts are not sub totaled. You will need to write in the adjusted subtotal amount below the total showing on the receipt.

1. The Band Boosters will only accept Yoder's register receipts dated within our collection period.
2. The Band Boosters will only accept Yoder's receipts on the collection dates published in the newsletter and posted at school.
3. Funds will be credited to the student's band account only.

This is the Band Booster policy – contacting Yoder's will not change the Band Booster policy –

NO EXCEPTIONS! Anyone with questions, please contact Sue Spotts.

**Dates on receipts should be from June 1—Aug 30, 2006 only! Turn in date is Sept 5-6, 2006**

**Next Booster Meeting July 10, 2006 7:00PM**

**Executive Board meets at 6:30PM**

In an effort to reduce newsletter costs, we would like to send out the newsletter via e-mail. Please visit [www.gsband.com](http://www.gsband.com) to sign up for your copy via e-mail. If you would still like it mailed to your home please drop a note or call to Dana Riehl at 355-2584, Lucy Parkes at 354-5358 or Curt Berstler at 351-0590

Thank You!

### Current Fundraisers:

**Yoder's Receipts:** Collect receipts from Yoder's Market or Yoder's Pharmacy between June 1st– Aug. 31, 2006

Turn in Dates—Sept 5th and 6th

### Sub sale coming:

Due date for orders is August 4th....See the Order forms in this Newsletter.

### GSHS Band Officers 2006/2007

President—Katie Parkes  
 Vice President—Emily Strittmatter  
 Secretary—Valerie Martin  
 Treasurer—Vanessa Martin  
 Historian—Melissa Witmer  
 Librarian—Hannah Ertzgard  
 12th Grade Rep—Rebecca Heaps  
 11th Grade Rep—Chris Orr  
 10th Grade Rep—Chris Hershey  
 9th Grade Rep—Jessie Mancuso

### Booster Officers 2006/2007

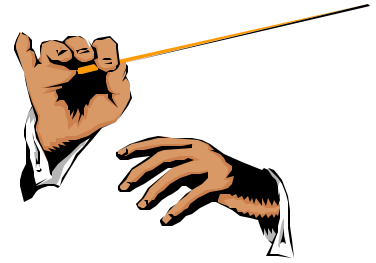
President—Lucy Parkes 354-5358  
 Vice President—Andrea Berstler 351-0590  
 Treasurer—Vicky Trego 610-286-0295  
 Secretary—Betsy Strittmatter  
 Student Account Secretary—Tim Heitz  
 Financial Secretary—Abby Keiser

## Artie Shaw Orchestra Concert

If you have never heard of this wonderful group, make plans now to attend the Artie Shaw Orchestra concert September 25, 2006 in the Stan Dean Auditorium. Artie Shaw is a renowned Clarinetist in the Jazz and Big Band Era. His Orchestra travels around the country playing for audiences of all ages. A big thank you goes out

to the New Holland Lions Club for bringing Artie Shaw Orchestra to New Holland and allowing the Band students the opportunity earn money towards their upcoming trip to Disney World in January of 2008....

Students can earn money for their student accounts by selling tickets and receiving an



amount per tickets sold.....see information/order form enclosed!

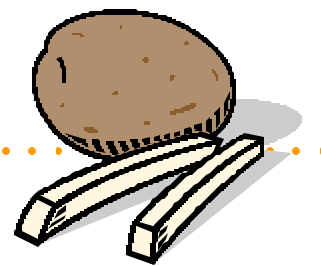
Tickets will be available for \$25.00 each...Order early from a band student to assure your seat.

## Preliminary Disney Trip Payment Schedule

Who's the leader of the club that's made for you and me.... **M-I-C-K-E-Y M-O-U-S-E** ...and Mr. Fitz is the leader of our band! Yes, its just around the corner and preparations will be getting started to travel to Disney in January of 2008. We want to keep everyone as informed as possible so we've set

up a preliminary payment schedule so we can make sure our payments to our travel agency will arrive on time. It is estimated that the trip will cost around \$900.00, **but this figure will not be known for many months to come.** We **estimate** that we will have 4 payments with the first payment of \$225.00 which would included

a \$100.00 non-refundable deposit toward the trip along with a signed contract with your intent to participate handed in by end of May 2007. Any questions can be answered by calling Lucy Parkes at 354-5358



## French fry stand training night set

Anyone interested in aiding the boosters with the fry stand is invited out Thursday, August 31st at 7pm. For a training night. The boosters are looking for people who would be willing to operate the stand for one or two games this season. With over 100 band students in high school and as many in Middle school it is our

hope we can have people learn more about the running of the fry stand so it will not fall an any one persons shoulders. Please consider coming out and signing up for the fry stand this coming fall sports season. The fry stand is the main source of income for the boosters, please help us to continue to aid Mr. Fitz and the band

students through scholarships, picnic, uniform needs, money to aid in trip costs. With everyone's help we can accomplish much for our students. Middle School parents are always welcome to attend meetings and get involved now . **You do not need to wait till your child moves into the high school.**

## Volunteer Form – French Fry Stand

Once again, the Band Boosters will be offering French Fries as a concession item at all home fall sporting events held on the stadium athletic field. Please volunteer your time to work at the stand. Below is a listing of games, dates and game start times. The concession stand should be opened and ready for business at least 30 minutes prior to the start of each soccer and field hockey game and at least one hour prior to the start of each football game. There will be six individuals assigned to work at the football games and 2-3 individuals assigned to work at soccer, field hockey games and midget games. **Please circle the dates that you would like to volunteer your time. Thank You!**

**\*\*It is our goal to have everyone scheduled for at least one of their preferred dates for chaperone and/or fry stand. We try to give everyone interested in volunteering the opportunity although not all requests for all dates can be fulfilled.**

? Soccer/Football – Friday, September 1 – 4:00/7:30 (Lanc. Mennonite(NL)/ Twin Valley)

Soccer – Tuesday, September 7 – 5:30/7:00 Soccer (Cocalico)

Soccer – Wednesday, September 13 – game start time 5:30/7:00 (Elizabethtown)

Soccer – Friday, September 15 – game start time 4:00 (Conestoga Valley)

Soccer – Tuesday, September 19 – game start time 5:30/7:00 (Penn Manor)

Football – Friday, September 22 – game start time 7:30 (Manheim Central)

Soccer – Thursday, September 28 – game start time 5:30/7:00 (Cedar Crest)

Football – Friday, September 29 – game start time 7:30 ( Lebanon) \* **Homecoming\***

Soccer – Tuesday, October 10 – game start time 5:30/7:00 (Ephrata)

Football – Friday, October 20 - game start time 7:30 (Solanco)

Football – Friday, November 3 – game start time 7:30 (Ephrata)

\*\*Midget Football Games: Sept. 17<sup>th</sup>, Oct. 22, & Oct. 29.....from about 1:00 pm –5:00 pm  
(circle if interested)

**Your Name:** \_\_\_\_\_ **E-Mail** \_\_\_\_\_

**Student's Name:** \_\_\_\_\_ **Grade** \_\_\_\_\_

**Address:** \_\_\_\_\_

**Phone Number:** \_\_\_\_\_

**\*Please see reverse side for chaperone and committee opportunities\***

## Chaperone Volunteer Form

**\*\*It is our goal to have everyone scheduled for at least one of their preferred dates for chaperone and/or fry stand. We try to give everyone interested in volunteering the opportunity although not all requests for all dates can be fulfilled. So please fill out both sides of this form and return as soon as possible.**

**Parade/Exhibition Chaperones are needed:**

- Denver Parade – Wednesday, September 13, 2006
- Hempfield Exhibition – Saturday, September 16, 2006
- Ephrata Parade – Wednesday, September 27, 2006
- New Holland – Wednesday, October 4, 2006

**Football Game Chaperones are needed:**

- Friday, September 1, 2006 – Twin Valley at home
- Friday, September 8, 2006 – at Columbia
- Friday, September 15, 2006 – at Lampeter Strasburg
- Friday, September 22, 2006 – Manheim Central at home
- Friday, September 29, 2006 – Lebanon at home (homecoming)
- Friday, October 6, 2006 – at Conestoga Valley
- Friday, October 13, 2006 – at Elizabethtown
- Friday, October 20, 2006 – Solanco at home
- Friday, October 27, 2006 – at Cocalico
- Friday, November 3, 2006 – Ephrata at home

**Come Join us on the Band Bus!!!**



**Band Booster Committees – Volunteers Needed:**

**please check yes or no**

**Usher at Concerts**     Yes     No

**Fund Raising Committee**     Yes     No

**Communication Committee**     Yes     N

This committee will notify Booster members of meetings, cancellations and other business as well as working on the newsletter and publicity information for the media.

**Chaperone Committee**     Yes     No

Organize chaperones for home and away games, parades and band trips.

**Social Committee**     Yes     No

Planning any social events.

**Vehicle and Band Equipment Committee**     Yes     No

Maintaining vehicles and all equipment used by the band, as well as building various items needed during the season.

**Scholarship Committee**     Yes     No

Review and select qualified candidates for the Garden Spot Band Booster yearly scholarship program.

**Other (i.e. nurse, carpenter, baker...)** \_\_\_\_\_

**Please fill out information and return to: Dana Riehl,  
191 Hillcrest Road, New Holland, Pa 17557 on or before July 31, 2006**







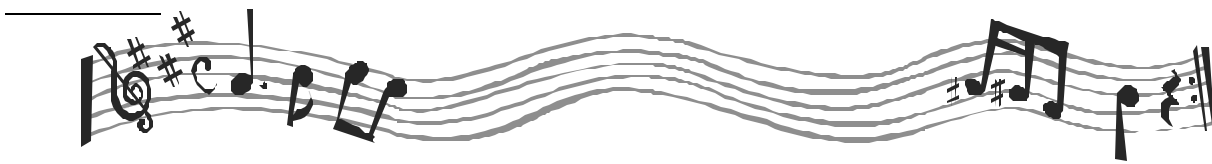
# 2005-2006 GSHS Marching Band DVD Highlights of the band year

Just \$15.00 will reserve your DVD today.  
(DVD's will be distributed during band camp in July/August)

Please fill out and return bottom portion of this form  
no later than July 15, 2006.

## Mail orders to:

**GSHS Band DVD**  
**c/o Andrea Berstler**  
**586 E Jackson St**  
**New Holland, PA 17557**



Name \_\_\_\_\_

Mailing Address \_\_\_\_\_

\_\_\_\_\_  
Phone Number \_\_\_\_\_

Grade \_\_\_\_\_

Quantity \_\_\_\_\_ @ \$15 each = Total Enclosed \_\_\_\_\_

Make checks payable to the GSHS Band Boosters